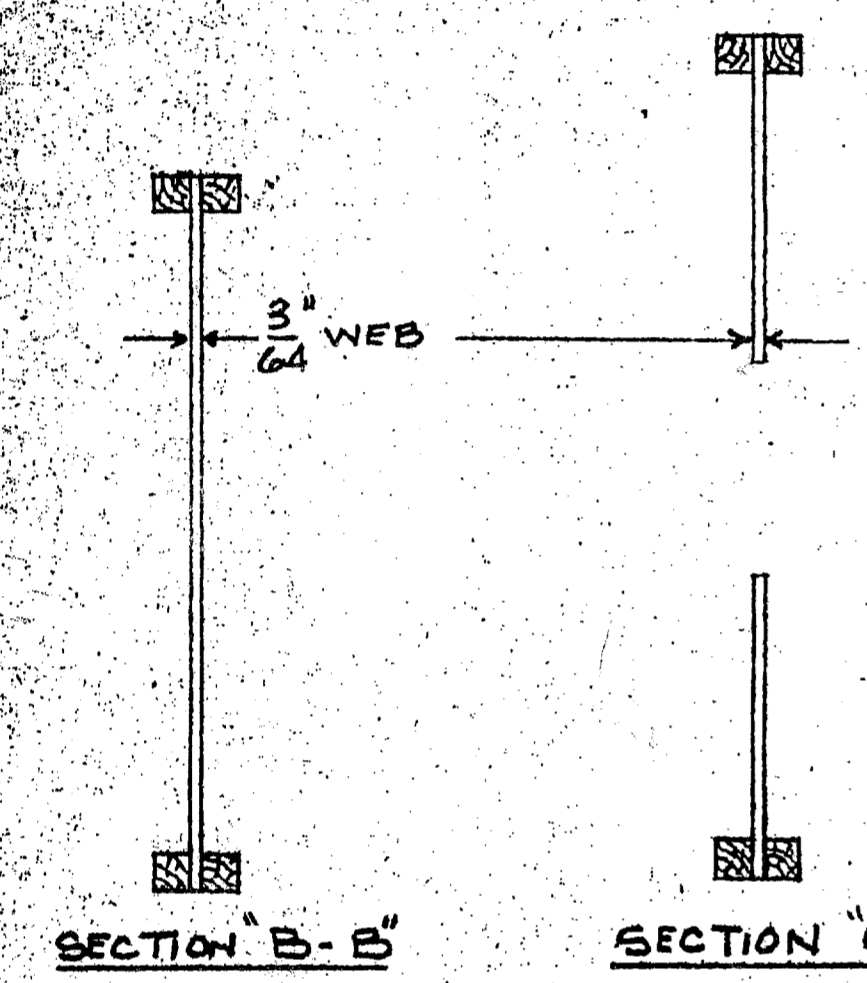


NOTE:-  
FIT THIS CONTOUR FOR SNUG FIT  
TO INSIDE OF CAP STRIP  
(TOP AND BOTTOM OF SPAR)  
NAIL & GLUE IN PLACE AFTER  
FINAL ALIGNMENT

SPAR SPACER BLOCK  
MATL. SPRUCE

SECTION "A-A"

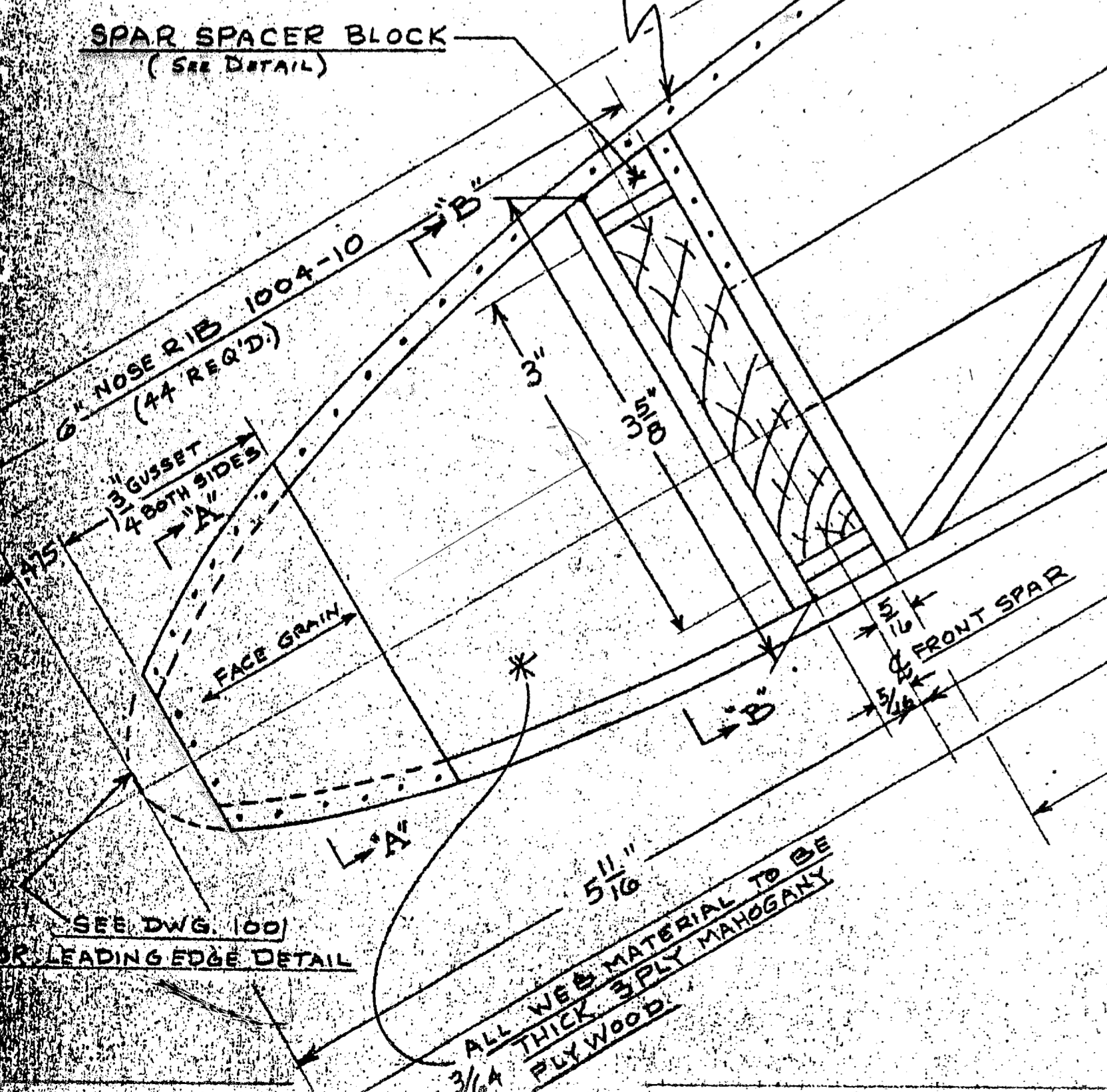


SECTION "B-B"

SECTION "C-C"

NAIL & GLUE (BOTH SIDES) WITH 20 GAUGE COATED  
AIRCRAFT NAILS - SPACE 3/8 TO 1/2 APART

SPAR SPACER BLOCK  
(SEE DETAIL)

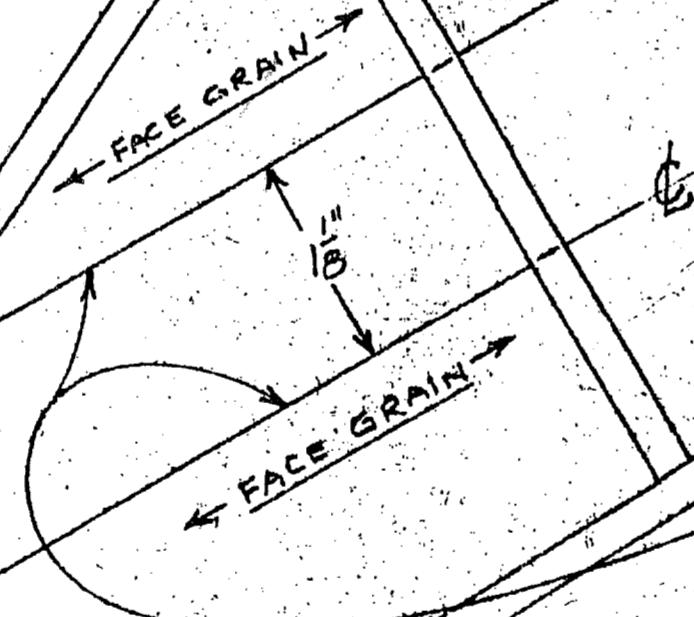


LEADING EDGE DETAIL

ALL WEB MATERIAL TO BE  
3/16 THICK 3 PLY MAHOAGNY  
PLY WOOD

SEE DWG. 100

27/16 RIB AT AILERON 1004-3



ALL WEB MATERIAL TO BE  
3/16 THICK 3 PLY MAHOAGNY PLY WOOD

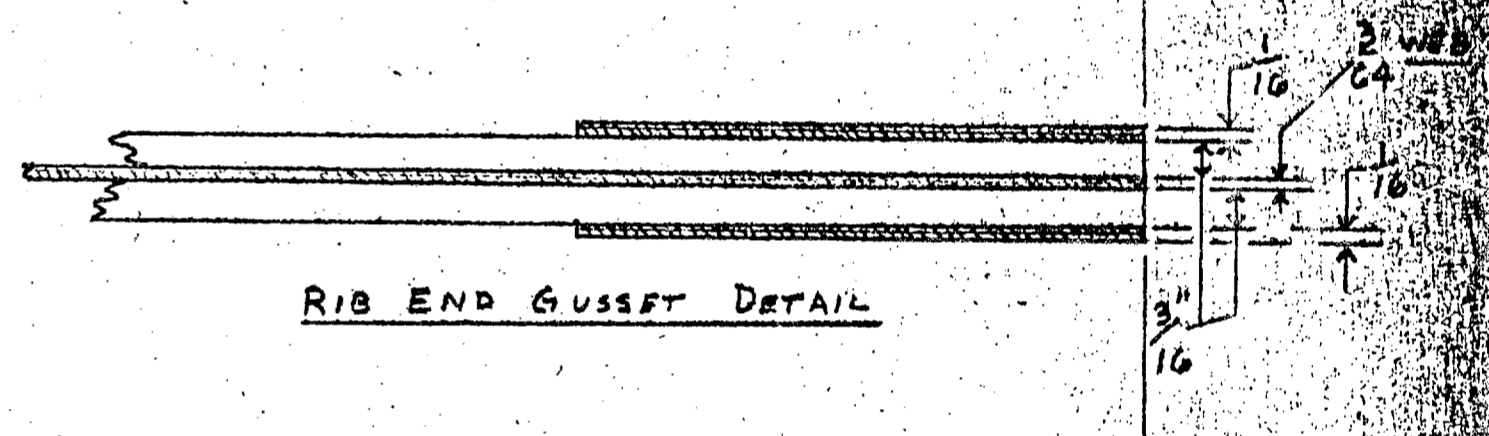
3 8" FULL RIB 1004-1 24 REQ'D  
1/8" GUSSET ROOT RIBS TO BE COVERED WITH 3 PLY MAHOAGNY PLY WOOD - AIRCRAFT QUALITY

NOTE:-  
ALL CAP STRIP, VERTICAL & DIAGONAL MEMBERS TO BE 3/16 x 3/16 SQUARE SPRUCE - GRADE "A" AIRCRAFT QUALITY.  
ALL WEB MATERIAL TO BE 3/16 THICK 3 PLY MAHOAGNY PLY WOOD - GRADE "A" AIRCRAFT QUALITY.  
ALL NOSE BLOCK MATERIAL TO BE SPRUCE - GRADE "A" AIRCRAFT QUALITY.  
USE THIS DWG. AS JIG. ON 3/4 THICK PLYWOOD BOARD

1004-2 16 REQ'D.  
(USE AS JIG)

3 ALL WEB MATERIAL TO BE  
3/16 THICK 3 PLY MAHOAGNY PLY WOOD

AILERON (ON LOWER WING ONLY)  
SEE DWG. 1002  
1030  
1/16 THICK 3 PLY MAHOAGNY PLY WOOD  
3" GUSSET BOTH SIDES



RIB END GUSSET DETAIL

2 1/2" AILERON HINGE SPACE

FACE GRAIN

AILERON FALSE SPAR

2 1/4" AILERON SPAR

1 1/4" WING RIB-AILERON ATTACH SPAR

13 5/16 REAR SPAR

1 1/4" REAR SPAR

1 1/4" REAR SPAR

1 1/4" REAR SPAR

1 1/4" REAR SPAR

1 1/4" REAR SPAR

1 1/4" REAR SPAR

1 1/4" REAR SPAR

1 1/4" REAR SPAR

1 1/4" REAR SPAR

1 1/4" REAR SPAR

1 1/4" REAR SPAR

1 1/4" REAR SPAR

1 1/4" REAR SPAR

1 1/4" REAR SPAR

1 1/4" REAR SPAR

HANNAFORD AIRCRAFT CO.				REVISED	SCALE	MODE
DR BY	ENG	DATE	APP'D	DATE	BY	NO.
SJDRK	2/24	11-7-56	FWR			
RIB DETAILS NIAGA 2412 38" CHORD				NOTED		1004